



- The EA/trading robot is optimized to only work on weltrade broker.

Register with weltrade using the link below to unlock the robot

<https://track.gowt.me/visit/?bta=38133&brand=weltrade>

- To explore more FREE trading robots/EA visit the website <https://synthetictrader.com>

## How to load the Trading Robot

you have accessed the zipped “synthetics master folder” copy the tpl file and follow the following steps

1. Open your weltrade mt5
2. Navitage to “file” on the top left corner, click on it
3. Next click “open data folder”
4. Open the “MQL5” file>profiles > templates , then paste the tpl file in here.

Now go back to the unzipped downloaded folder and copy the “synthetics master\_Royalty.ex file, this is your robot.

1. Open your weltrade mt5
2. Go to file >open data folder> MQL5 > experts  
paste the “synthetics master\_Royalty” ex5 file inside the experts folder.
3. Now close your mt5 and reopen it again.

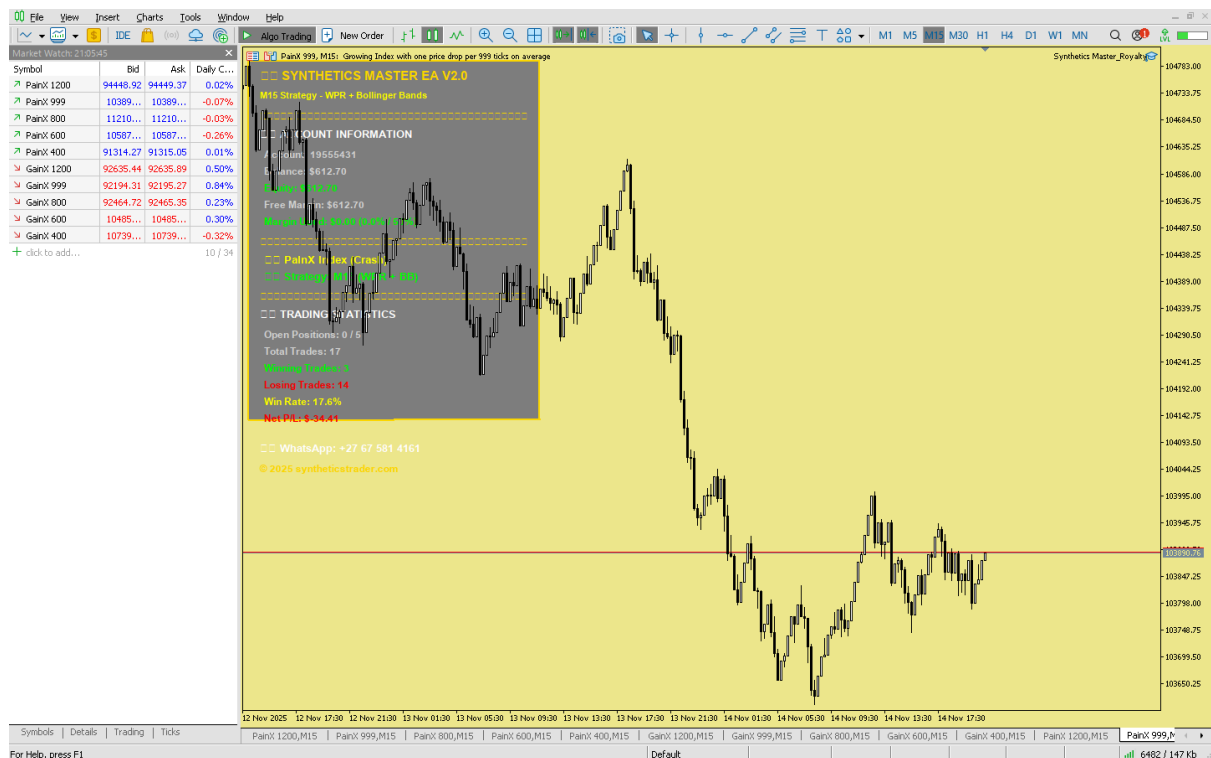
Attach the ‘clean yellow template to all your opened painx and gainx indices , by clicking charts>templates and select “clean yellow”

4. At the top menu next to file click on “VIEW”
5. Go to navigator

6. On the menu that appears, navigate to “Expert Advisors”

7. You will see “Synthetics Master\_Royalty”

8. Drag and paste the robot on all the spike indices (all painX indices and all GainX indices) and make sure the chart is on 15 minute time frame. When all is installed correctly, your screen should look like this



9. To ensure the robot/EA is activated at the top menu look for “algo trading “ and click the red square, it will turn to a green rectangle, this shows the EA/robot is activated and waiting for the perfect time to take its 1<sup>st</sup> trade. N.B just remember this EA

analyses the market close to a human behaviour, its not a scalping robot, it may take some time to enter trades bcz of its trading logic. So be patient and wait for the bot entries.